

**PAKISTAN – HILFE ZUR SELBSTHILFE e.V.**



# **HAQ MODEL SCHOOL PROJECT**

**AWAN SHARIF, GUJRAT DISTRICT, PAKISTAN**

# AID PROGRAMMS SINCE 2010 :

- Disaster Relief
- **Education**
- Healthcare
- Infrastructure



**Advice, Initial and Continuing Education,  
encourage people to take responsibility and  
develop initiative**

# AWAN SHARIF GUJRAT DISTRICT PAKISTAN



Largest village District Gujrat and last connecting Pakistan with Azad Kashmir.



# VISION

Haq Model School  
in the village of the  
ancestors of the charity  
member, the Berlin dentist  
Jameela Abdul Haq,

is intended to provide  
underprivileged children  
in the village and the  
surrounding area with  
education and to open up  
prospects for their future.



# OBJECTIVES

- For underprivileged children AWAN SHARIF/ surrounding area providing high quality and affordable primary education (grades 1 to 5).
- Encourage parents to do something for a better future for their children.
- Encourage children to educate themselves beyond the horizons of their village in order to open the way to a wide range of educational and career opportunities.

# IDEA OF HAQ MODEL SCHOOL

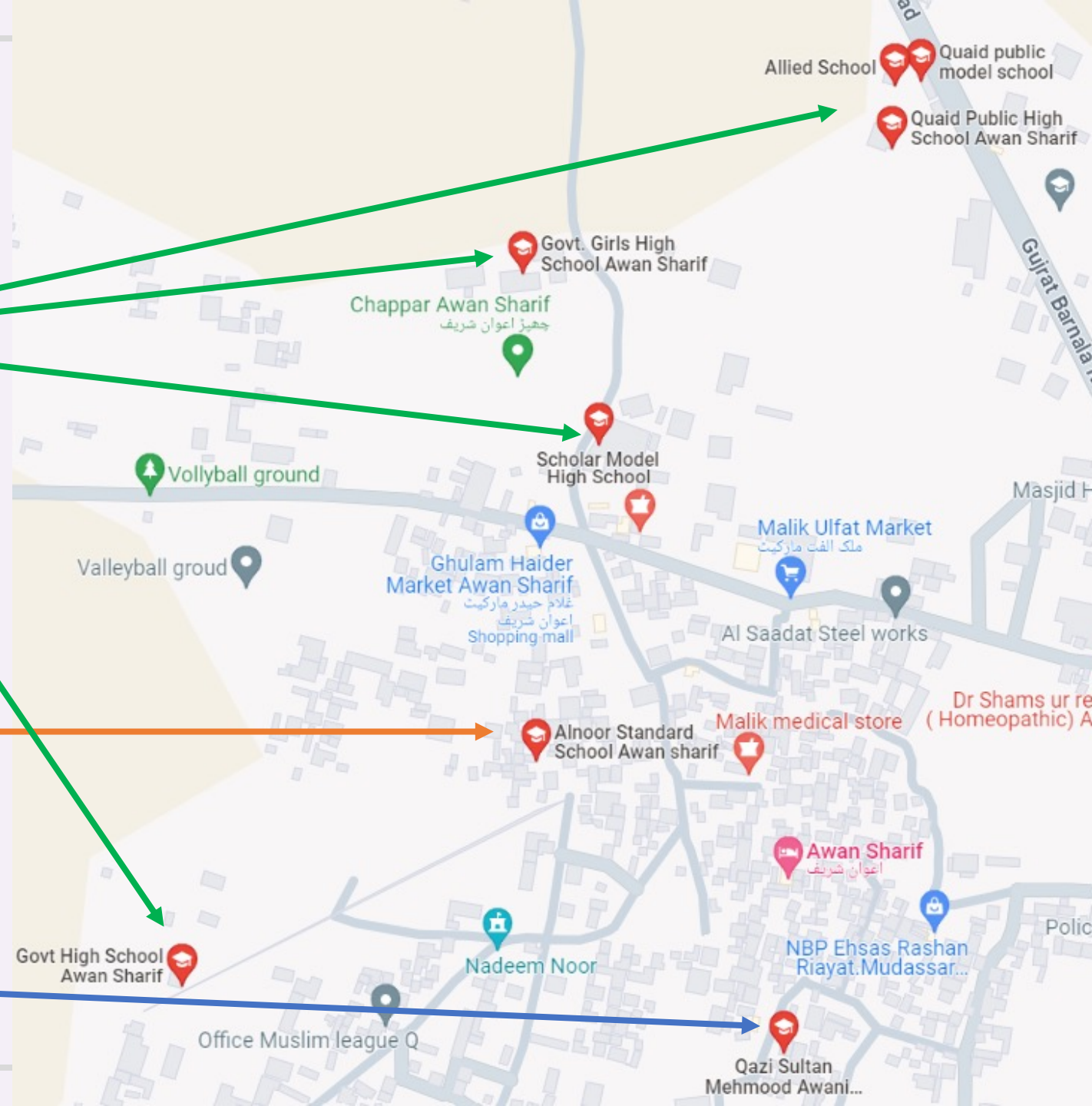
- Primary school education provider from Grades 1 to 5
- Official curriculum: Single National Curriculum of Pakistan
- Set prerequisites for students to easily transition to the next level of schooling

# SCHOOLS VICINITY

4 High Schools/  
Colleges

1 Elementary School

1 Religious School





# AWAN SHARIF CENSUS (2023)

- Men are usually the family's sole breadwinners, in occupations such as farming, grocery store owner, mobile shop owner, garage owner, repair shop owner etc.
- **Salary range(monthly):** **50,000 – 80,000 PKR**
- **Children between 6 and 11:** **980**
- **Children in school:** **686**
- **Children at home:** **294**
- Educated individuals have moved to bigger towns and cities, to support their families back in Awan Sharif.



# BUILDING HAQ MODEL SCHOOL\*

TOTAL PROJECTED COST: 140.000,- €

**STAGE 1 – 22.000,- €**

**Pilot project:  
Ground Floor with  
School Grounds;  
Grades 1 and 2 only**

STAGE 2 – 118.000,- €

Follow-up project:  
Extension and First Floor  
with Grades 3 - 5 added

\* Plot donated by the Abdul Haq Family

# STAGE 1: BLUE PRINT

Total  
Construction  
Cost:  
22.000,- €

## HAQ MODUL SCHOOL



GROUND FLOOR PLAN

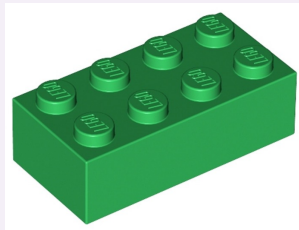
AREA CALCULATION		
	SQ.M	SQ.FT
GROUND FLOOR	344	3702.81

# FUNDING PHASE 1\*

## 'BRICKS FOR KIDS DONATION CAMPAIGN'

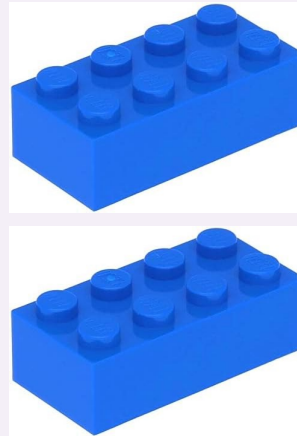
1 Green Brick = 250,-

€



1 Blue Brick = 500,-

€



1 Red Brick = 1000,-

€



\* We are grateful for every donation, even a small one!

# SCHOOL INTERIOR COSTS

Items	Costs PKR, Euros
<p><b>2 x Classrooms</b> 2 whiteboards, 2 sets teacher table/chair, 30 sets student table/2 chairs, 4 fans, 8 ceiling lights, 4 pin boards</p> <p><b>Staff room</b> (2 sets table/4 chairs, 2 fans, 1 water cooler, 2 ceiling lights, 1 cupboard</p> <p><b>Principal room</b> 1 office table/ 1 chair, 1 fan, 2 ceiling lights, 1 cupboard, 1 safe</p> <p><b>Reception</b> 2 benches 3-seater, 1 low table, 1 fan, 1 water cooler, 2 ceiling lights</p> <p><b>Storeroom</b> 3 cupboards, 1 ceiling light</p> <p><b>2 Boys/Girls Toilet each</b> 3 cubicles, 2 sinks, 2 mirrors, 2 ceiling lights, 3 exhaust fans</p> <p><b>2 Male/Female Toilet each</b> 1 cubicles, 1 sinks, 1 mirrors, 1 exhaust fan</p> <p><b>Security guard cabin</b> 1 table/chair, 1 bed, 1 shelf, 1 fan</p>	<p>tbc</p>



# SCHOOL RUNNING COSTS / MONTH

<ul style="list-style-type: none"> <li>• 1 Senior Teacher/Principal <b>50,000 PKR</b></li> <li>• 1 Classroom Teacher <b>15,000 PKR</b></li> <li>• 2 Housekeeping Staff <b>10,000 PKR</b></li> <li>• 1 Security Guard <b>5,000 PKR</b></li> <li>• 1 Receptionist/ Accounts Officer <b>3,000 PKR</b></li> <li>• 1 Nurse 1x wöchentl <b>3,000 PKR</b></li> </ul> <p>Total <b>86,000 PKR</b></p>	<ul style="list-style-type: none"> <li>• Power</li> <li>• Water</li> <li>• Solar</li> </ul> <p>Total <b>3,500 PKR</b></p>	<ul style="list-style-type: none"> <li>• Solar panels</li> <li>• Fans</li> <li>• Washrooms</li> <li>• Play Ground</li> </ul> <p>Total <b>5,000 PKR</b></p>	<ul style="list-style-type: none"> <li>• Towels</li> <li>• Soap</li> <li>• Cleaning materials</li> </ul> <p>Total <b>2,500 PKR</b></p> <p><b>Total</b> <b>97,000 PKR</b> <b>= 316,- €</b></p>

# Timeline

- Fund collection January 2024 – October 2024
- Construction November 2024 – April 2025
- Official permissions October 2024 – March 2025
- **First year** April 2025

# **DONATIONS**

## **KEYWORD 'HAQ MODEL SCHOOL'**

Donation Account PAKISTAN-Hilfe zur Selbsthilfe e.V.

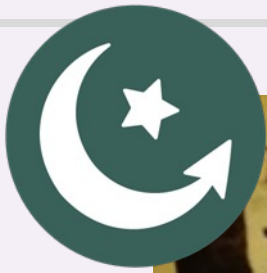
**BORDESHOLMER SPARKASSE**

**IBAN : DE96 2105 1275 0155 0165 38**

**BIC : NOLADE21BOR**

Alternative on Website:

[www.pakistan-hilfe.org](http://www.pakistan-hilfe.org)



Students at the SAYA SCHOOL in MAIRA AKKU/ISLAMABAD, which we have supported since 2010